

WEB²PRINTflo

Web to Print Server

The W2P solution for any RIP or TIFF Catcher

WEB2PRINTflo provides easy browser based upload of all standard file types to ANY workflow using ANY Macintosh or Windows internet browser. WEB2PRINTflo comes complete with a Harlequin RIP to process files creating a true ROOM softproof that will simulate the CTP output in every detail. See separate color channels, overprint, trapping and other fine details that are often lost on other softproofing systems.

Room Proof and/or File Delivery

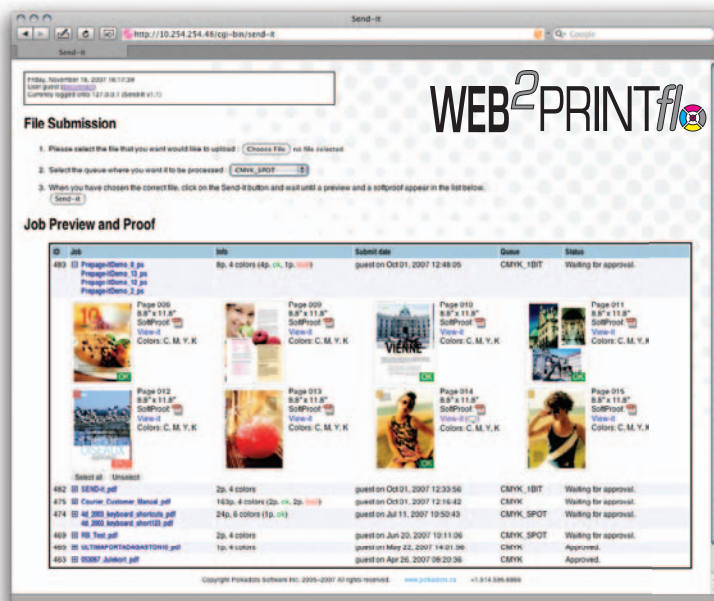
WEB2PRINTflo allows for quick and reliable delivery of files to the print provider or prepress production centre. WEB2PRINTflo then allows the customers to see their files after they have been RIP'd guaranteeing that the proof will match the output. WEB2PRINTflo's secure file delivery feature allows print providers and prepress production centres develop and maintain a close bond and lasting relationship with their customers.

Increase Profitability

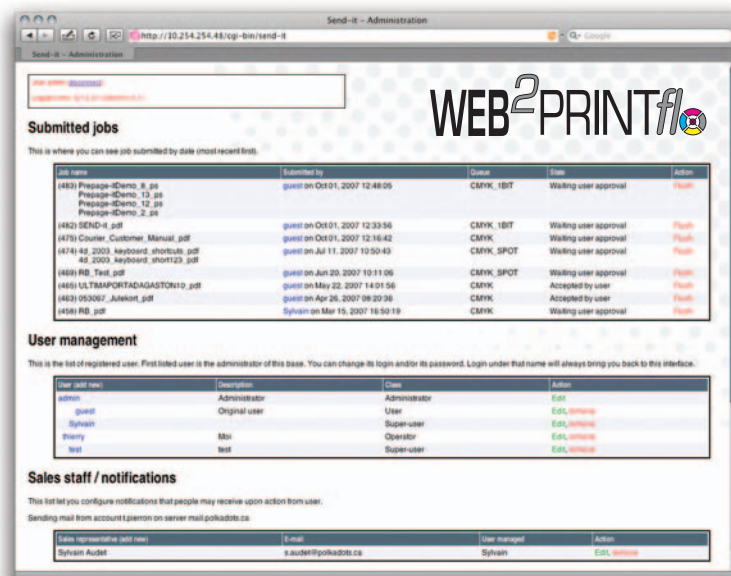
WEB2PRINTflo significantly reduces the costs involved in print and prepress customer relationships. By providing a secure and interactive environment where files can be uploaded, softproofed, cooperatively annotated and ultimately approved, WEB2PRINTflo reduces courier and shipment costs, saves time and avoids costly "make goods". Less wasted time and less wasted materials translate into more throughput in production and increased profitability.

Increase Competitive Advantage

WEB2PRINTflo can be easily customized and pre-configured to enable print providers and prepress centres to offer higher value, targeted services to their customers. WEB2PRINTflo allows any print or prepress center to host their own Web to Print solution that can either be installed outside of their firewall in a DMZ or inside their firewall and accessed through a Network Address Translator. Higher value service and reduced costs easily translate into an increased competitive advantage and finally into greater profitability.



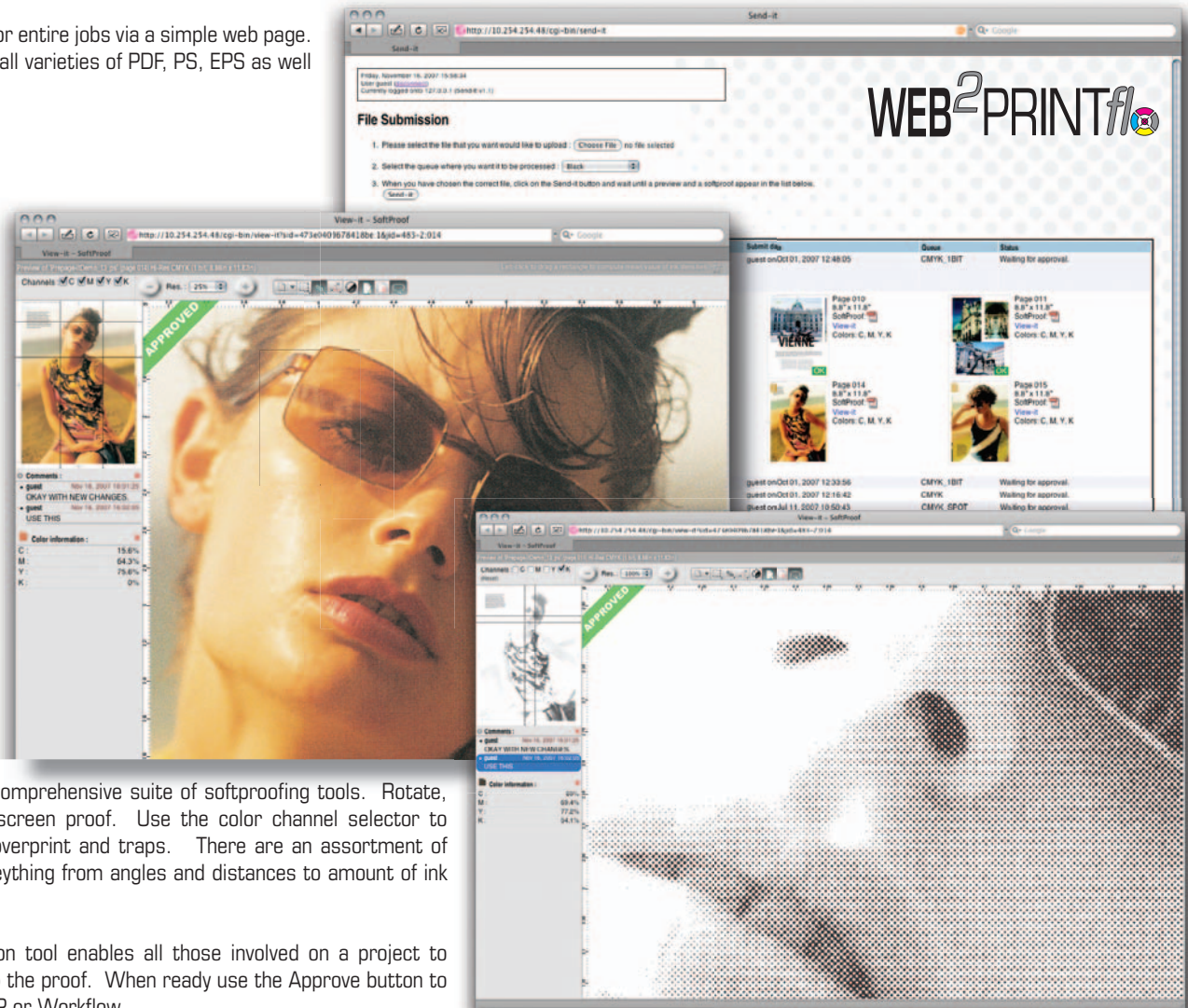
Simplified file submission and a unified, user friendly preview and proofing dialogue showing job ID, softproof or preview, submission date, submission queue and job status



Administrative login allows full control over users. Add new users, assign privileges and view jobs that users have submitted.

Submit individual pages or entire jobs via a simple web page. WEB2PRINTflo accepts all varieties of PDF, PS, EPS as well as DCS2 and TIFF files.

Pixel-on-Demand technology allows users to view minute details, precisely as they will appear on plate.



WEB2PRINTflo offers a comprehensive suite of softproofing tools. Rotate, flip and magnify the on screen proof. Use the color channel selector to view separations, verify overprint and traps. There are an assortment of measurement tools for everything from angles and distances to amount of ink being used.

The collaborative annotation tool enables all those involved on a project to quickly and easily mark up the proof. When ready use the Approve button to submit the files to any RIP or Workflow.

Features, Functionality and other useful information...

W2P Features

- 7/24 job submission
- Lightning fast Pixel-on-Demand
- Secure ROOM Proofing
- Collaborative Annotations
- ICC color Management
- Approve
- Reject
- TrueProof using secure ROOM files
 - Simulate CTP output
 - verify quality of traps
 - verify quality placed images
 - verify quality of scans
 - verify quality of fonts

Input:

- PDF, PDF/X-1A, PDF/X-3
- PostScript
- EPS
- DCS2
- TIFF

Output

- 1 bit TIFF
- 8 bit / 1 bit PDF/X-1a
- 8 bit / 1 bit DCS/DCS2
- High Resolution Softproof

Output Connectivity

- Output to any Workflow
- Output to any RIP
- Output to any 1 bit TIFF Catcher
- Output to any Proofing device

Options

- Move-it Auto file saving and processing
- ICC based contone proofing
- ICC based dot proofing
- Upgrade to 9900 DPI
- CIP3 pdf file generation
- Ink Key Report
- Automated Trapping
- HDS (Stochastic Screening)
- PDF Creation
- PDF Splitting
- FTP upload and download
- TIFF/IT output

Minimum Server System

Requirements

- Dell Dimension 490 Dual Core Intel® Xeon® 5130, 4MB Cache, 2.00GHz, 1333MHz FSB
- 2048 MB RAM,
- 146 GB SAS HD 10k RPM
- 10/100/1000Base-T NIC
- 48X CD drive
- External SCSI Card
- Microsoft Windows XP Pro - 32 bit*
- Monitor (15"), Mouse, Keyboard

Recommended Internet Security

- NAT or Firewall with DMZ

* Global Graphics Harlequin RIP does not support a 64 bit processing environment.

Polkadots Software Inc.

2501 Dollard
 Montreal • Quebec • Canada • H8N 1S2
 Tel: +1.514.595.6866
 Fax: +1.514.595.6012

sales@polkadots.ca • www.polkadots.ca